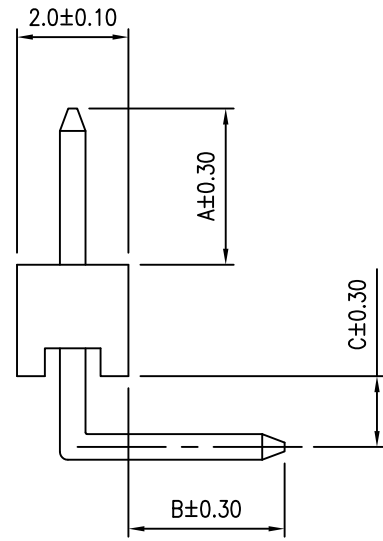
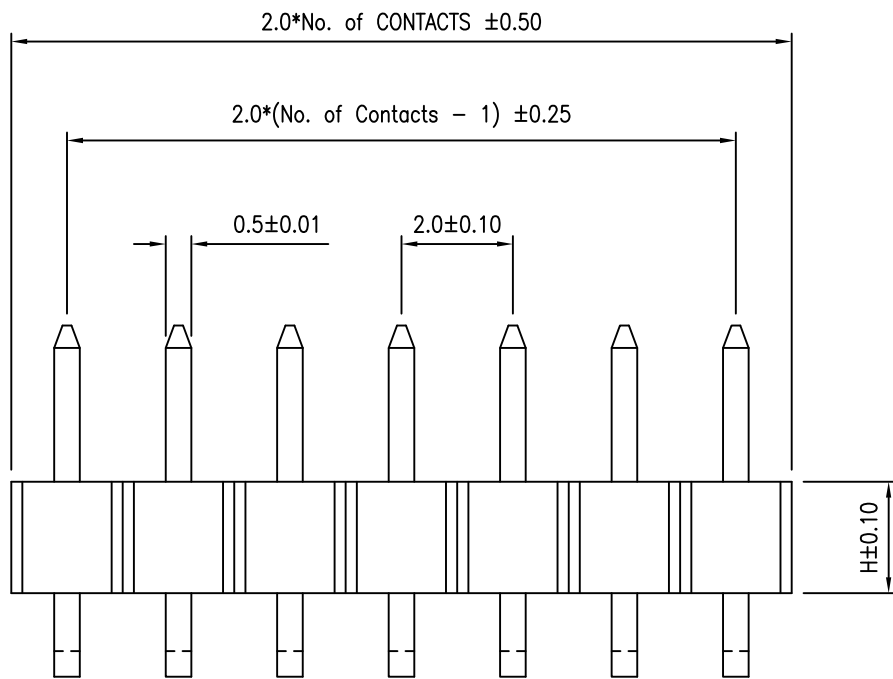


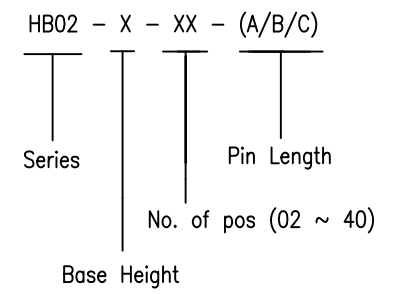
REV	ECN NO.	APP.	DATE
A	NEW DESIGN		



SPECIFICATION

- \* Current Rating: 2 A
- \* Withstanding Voltage: 500 VAC ( 1 min. )
- \* Insulation Resistance: 1000 Megohms MIN.
- \* Contact Resistance: 30 Milliohms MAX.
- \* Operating Temperature: -40°C to + 105°C

ORDER INFORMATION



MATERIAL

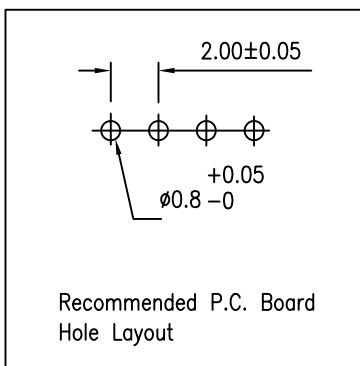
- \* Contact: Brass  
0.50mm square post
- \* Insulator: PA6T & 30% G.F.
- \* Plating: All Gold

Pin Chart

Base Height

Pin	A	B	C
1	3.5	2.5	1.0
2			
3			

Base	H
1	2.0
2	1.5
3	1.0



(주)신화테크 SHINHWA TECH CO.,LTD  
TEL : 031-451-9441 FAX : 031-451-9444

0.0±	SCALE:	TITLE:	PART NO:
0.00±	UNIT: MM	2.00MM Pin Header Single Row Right Angle	APP BY:
0.000±			CHK BY:
		MATL: PA6T & 30% G.F.	DR BY:
		DWG. NO. HB02	